

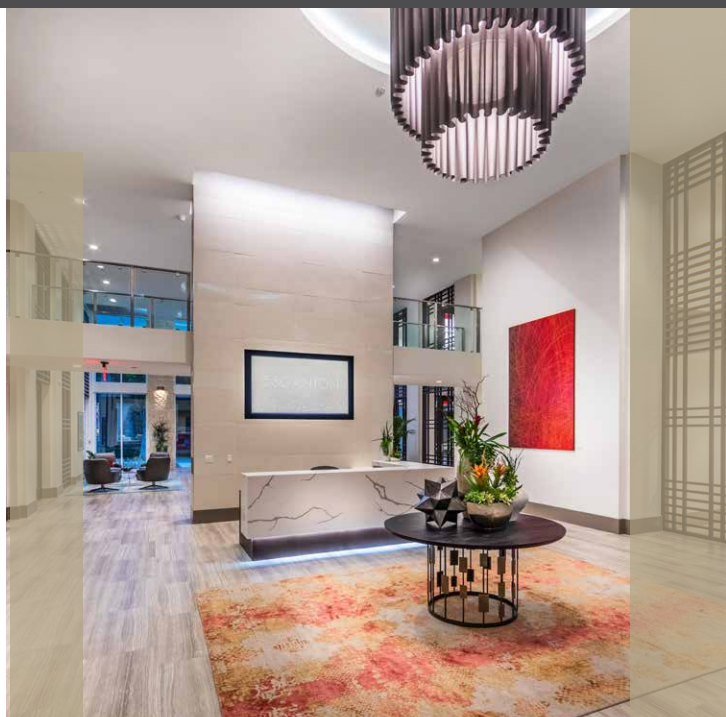
# The language of luxury.



## UPSCALE APARTMENT RESIDENCES IN SOUTH COAST METRO

Undeniably impressive, 580 ANTON offers new and elegant living that's flawless. It's a sprawling work of modern art created for exceptional and intelligent living. Experience breathtaking modern architecture, spacious residences, and top of the line finishes. The atmosphere is tranquil and inspired. The combination is perfection. The coveted location in the Town Center of Costa Mesa allows immediate access to world-class performances at Segerstrom Center for the Performing Arts, as well as gourmet dining and designer couture at prestigious South Coast Plaza. There is nothing typical about this new community because there is nothing typical about you.

# 580 ANTON



580 Anton Blvd., Costa Mesa, CA 92626

714-540-5580 | [580ANTON.COM](http://580ANTON.COM)





## COMMUNITY AMENITIES

- Relaxing podium balcony with sparkling resort-inspired pool and spa
- BBQ area with luxury seating, bar, and TV's
- Outdoor seating areas with water feature and firepit
- Grand Salon for entertaining with fireplace and piano
- Entertaining club and game rooms
- Lake view fitness center with Aktiv Virtual™ video training on demand
- Yoga/dance studio
- Relaxation Room
- Business center with Internet café and meeting rooms
- Fully stocked coffee bar
- Pet friendly grooming salon
- Community Wi-Fi
- Convenient on-site resident storage
- Smoke-free community
- Just steps from upscale shopping, dining, and entertainment at South Coast Plaza
- Easy access to the 405, 55, and John Wayne Airport

Welcome to style that speaks directly to you. Welcome to 580 ANTON.

## RESIDENCE FEATURES

- Spacious studio, 1-, and 2-bedroom residences
- Gourmet kitchen with stainless steel appliances including microwave and dishwasher, gas range cooking, premium quartz countertops with full height backsplash, and under cabinet lighting
- High-grade vinyl wood plank flooring throughout
- Designer selected pendant and recessed lighting fixtures
- Large walk-in closets
- Tubs and showers with tile surrounds
- Grohe stainless steel plumbing fixtures
- In-home washer and dryer
- Air conditioning and heating for complete comfort
- Balconies and private patios in select units
- Data equipped and tech ready

714-540-5580 | 580ANTON.COM



Professionally  
Managed by



The information provided is solely for information purposes and is subject to change without notice. Square footages and/or room dimensions are approximate and may vary. \*See leasing center for further details.